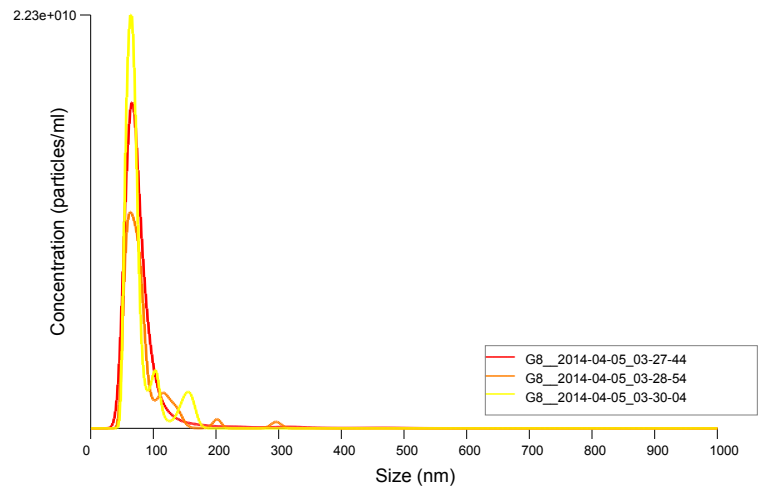


FTLA distribution - Average Size / Concentration
Red error bars indicate +/- 1 standard error of the mean



Size / Concentration

Operator:	Will
Sample:	G8
Included files:	G8_2014-04-05_03-27-44 G8_2014-04-05_03-28-54 G8_2014-04-05_03-30-04
Date/Time of Report	12/04/2014 16:16:34
Dispersant/Diluent:	0.2 um filt. PBS
Pretreatment	none
Remarks	F=15; C=16+; DT=4, vortex 2.5k for 10 sec

BATCH AVERAGE RESULTS:

FTLA Size Distribution:	Mean: 79.4 +/- 1.5 nm Mode: 64 +/- 0.7 nm SD: 35.6 +/- 3.9 nm D10: 53 +/- 0.7 nm D50: 68.7 +/- 1.3 nm D90: 113 +/- 4.7 nm
Size Distribution:	Mean: 86 +/- 2.3 nm Mode: 66 +/- 1.5 nm SD: 47 +/- 4.3 nm D10: 45 +/- 0.3 nm D50: 73 +/- 2.0 nm D90: 139 +/- 5.6 nm
Dilution factor:	2000
Total Concentration:	26.02 +/- 2.53 particles/frame 5.99e+011 +/- 5.82e+010 particles/ml
Total Completed Tracks:	4580
Average Drift Velocity:	7573 nm/s

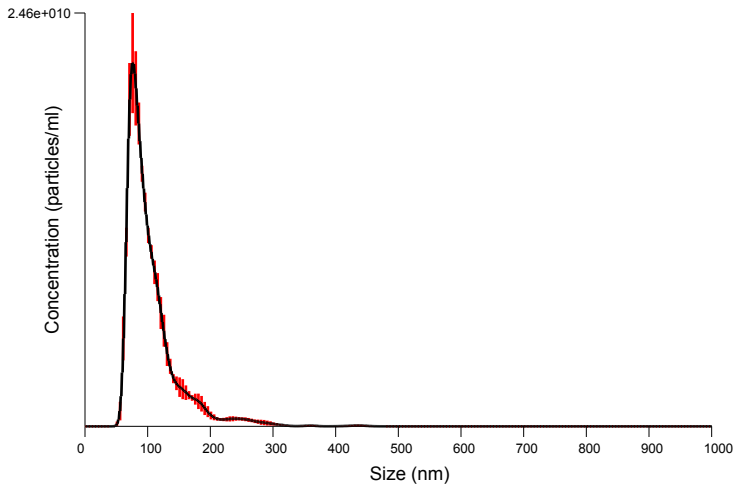
CAPTURE SETTINGS

Camera Type:	sCMOS
Shutter length:	Varied
Shutter setting:	1300
Camera gain:	512
Frame rate:	Varied

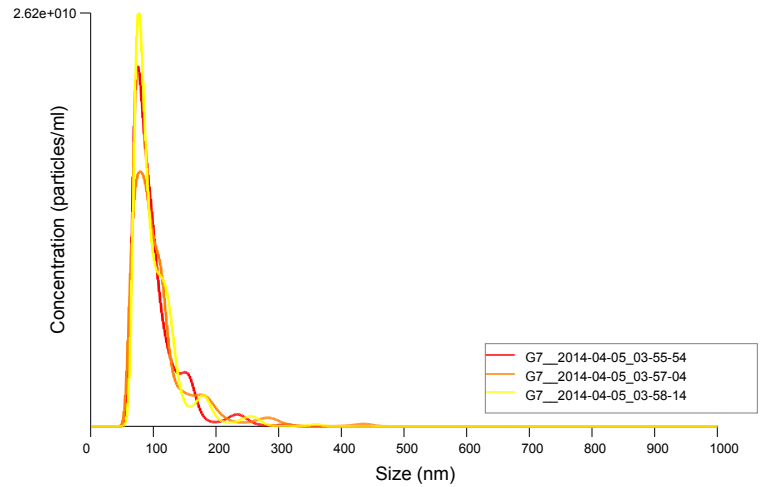
ANALYSIS SETTINGS

Background Extract:	On
Detection Threshold:	4 - Multi
Blur:	AUTO
Min track length:	AUTO
Min expected size:	AUTO
Temperature:	19.3, 19.3, 19.3 °C
Viscosity:	1.02, 1.02, 1.02 cP

WARNINGS



FTLA distribution - Average Size / Concentration
Red error bars indicate +/- 1 standard error of the mean



Size / Concentration

Operator:	Will
Sample:	G7
Included files:	G7_2014-04-05_03-55-54 G7_2014-04-05_03-57-04 G7_2014-04-05_03-58-14
Date/Time of Report	12/04/2014 16:25:35
Dispersant/Diluent:	0.2 um filt. PBS
Pretreatment	none
Remarks	F=15; C=16; DT=5, vortex 2.5k for 10 sec

BATCH AVERAGE RESULTS:

FTLA Size Distribution:	Mean: 104.6 +/- 2.2 nm Mode: 77 +/- 1.2 nm SD: 43.2 +/- 4.0 nm D10: 68 +/- 1.2 nm D50: 90.7 +/- 1.8 nm D90: 156 +/- 7.0 nm
Size Distribution:	Mean: 113 +/- 3.2 nm Mode: 81 +/- 4.3 nm SD: 53 +/- 4.6 nm D10: 61 +/- 0.7 nm D50: 100 +/- 1.7 nm D90: 178 +/- 8.0 nm
Dilution factor:	2000
Total Concentration:	46.73 +/- 1.13 particles/frame 1.08e+012 +/- 2.60e+010 particles/ml
Total Completed Tracks:	6570
Average Drift Velocity:	7069 nm/s

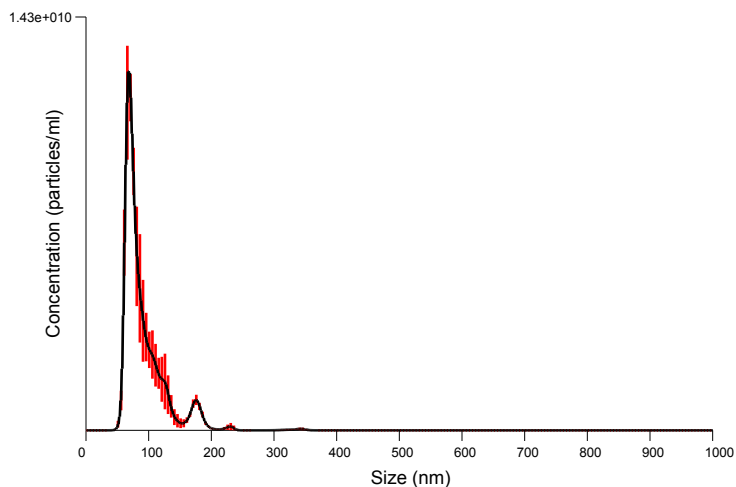
CAPTURE SETTINGS

Camera Type:	sCMOS
Shutter length:	Varied
Shutter setting:	1300
Camera gain:	512
Frame rate:	Varied

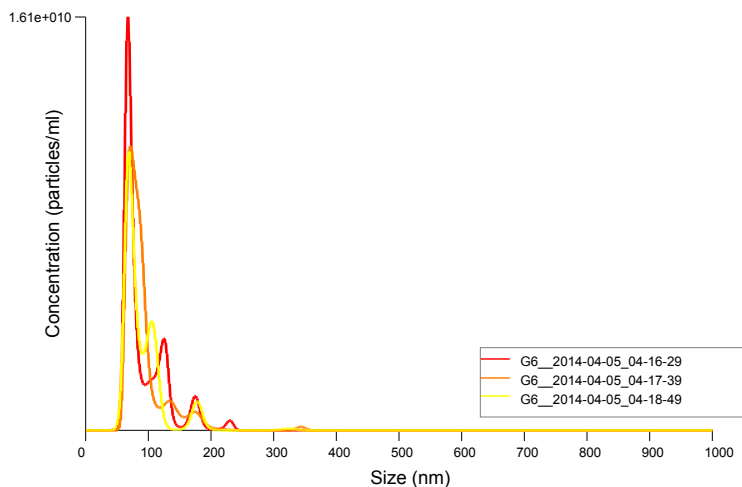
ANALYSIS SETTINGS

Background Extract:	On
Detection Threshold:	5 - Multi
Blur:	AUTO
Min track length:	AUTO
Min expected size:	AUTO
Temperature:	19.3, 19.3, 19.3 °C
Viscosity:	1.02, 1.02, 1.02 cP

WARNINGS



FTLA distribution - Average Size / Concentration
Red error bars indicate +/- 1 standard error of the mean



Size / Concentration

Operator:	Will
Sample:	G6
Included files:	G6_2014-04-05_04-16-29 G6_2014-04-05_04-17-39 G6_2014-04-05_04-18-49
Date/Time of Report	12/04/2014 16:38:37
Dispersant/Diluent:	0.2 um filt. PBS
Pretreatment	none
Remarks	F=15; C=16; DT=4, vortex 2.5k for 10 sec

BATCH AVERAGE RESULTS:

FTLA Size Distribution:	Mean: 90.6 +/- 0.5 nm
	Mode: 69 +/- 1.2 nm
	SD: 34.9 +/- 0.4 nm
	D10: 63 +/- 0.7 nm
	D50: 77.3 +/- 1.8 nm
	D90: 127 +/- 5.7 nm
Size Distribution:	Mean: 96 +/- 1.3 nm
	Mode: 71 +/- 5.2 nm
	SD: 42 +/- 1.0 nm
	D10: 54 +/- 0.3 nm
	D50: 86 +/- 0.6 nm
	D90: 151 +/- 3.8 nm
Dilution factor:	2000
Total Concentration:	17.19 +/- 0.78 particles/frame
	3.95e+011 +/- 1.81e+010 particles/ml
Total Completed Tracks:	2705
Average Drift Velocity:	7691 nm/s

CAPTURE SETTINGS

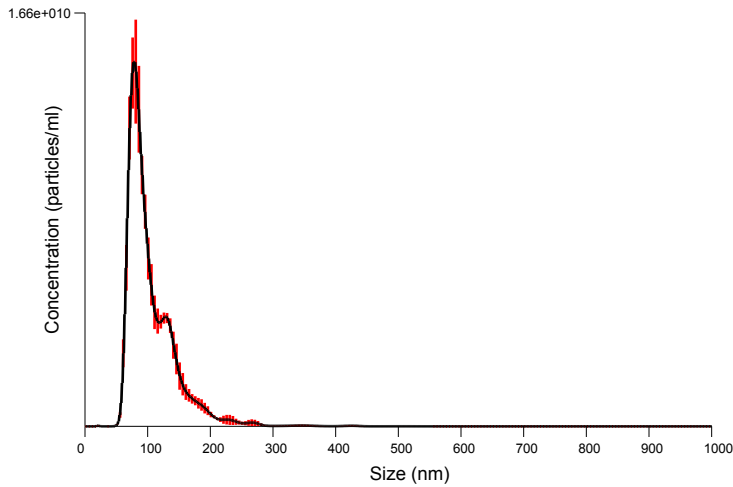
Camera Type:	sCMOS
Shutter length:	Varied
Shutter setting:	1300
Camera gain:	512
Frame rate:	Varied

ANALYSIS SETTINGS

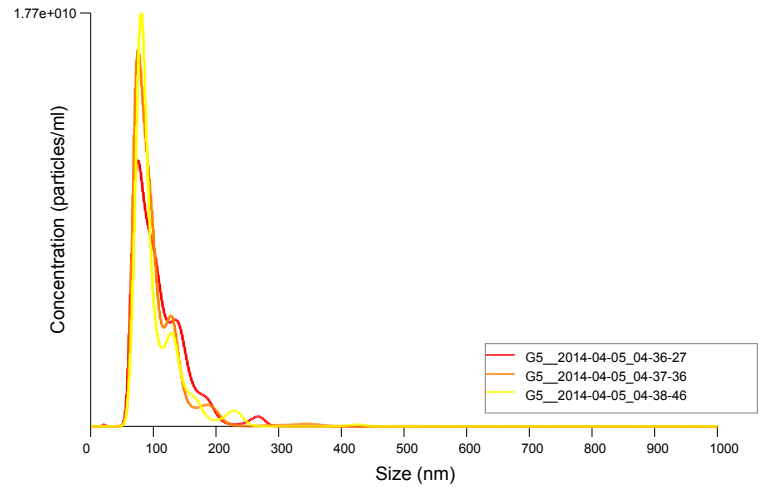
Background Extract:	On
Detection Threshold:	4 - Multi
Blur:	AUTO
Min track length:	AUTO
Min expected size:	AUTO
Temperature:	19.3, 19.3, 19.3 °C
Viscosity:	1.02, 1.02, 1.02 cP

WARNINGS

Vibration detected during analysis



FTLA distribution - Average Size / Concentration
Red error bars indicate +/- 1 standard error of the mean



Size / Concentration

Operator:	Will
Sample:	G5
Included files:	G5_2014-04-05_04-36-27 G5_2014-04-05_04-37-36 G5_2014-04-05_04-38-46
Date/Time of Report	12/04/2014 17:04:30
Dispersant/Diluent:	0.2 um filt. PBS
Pretreatment	none
Remarks	F=15; C=16; DT=5, vortex 2.5k for 10 sec

BATCH AVERAGE RESULTS:

FTLA Size Distribution:	Mean: 104.5 +/- 2.1 nm Mode: 77 +/- 2.0 nm SD: 40.0 +/- 0.5 nm D10: 69 +/- 0.7 nm D50: 92.0 +/- 3.1 nm D90: 150 +/- 4.6 nm
Size Distribution:	Mean: 113 +/- 2.0 nm Mode: 85 +/- 5.7 nm SD: 50 +/- 1.1 nm D10: 62 +/- 0.3 nm D50: 102 +/- 2.7 nm D90: 175 +/- 3.7 nm
Dilution factor:	2000
Total Concentration:	30.76 +/- 0.85 particles/frame 7.08e+011 +/- 1.95e+010 particles/ml
Total Completed Tracks:	4400
Average Drift Velocity:	7705 nm/s

CAPTURE SETTINGS

Camera Type:	sCMOS
Shutter length:	Varied
Shutter setting:	1300
Camera gain:	512
Frame rate:	Varied

ANALYSIS SETTINGS

Background Extract:	On
Detection Threshold:	5 - Multi
Blur:	AUTO
Min track length:	AUTO
Min expected size:	AUTO
Temperature:	19.5, 19.5, 19.5 °C
Viscosity:	1.01, 1.01, 1.01 cP

WARNINGS