

EVROGEN

Innovative Biotechnology
Company

Evrogen JCS

Miklukho-Maklaya str, 16/10

117997, Moscow, Russia

Tel: +7(495) 429 8020

Fax: +7(495) 429 8520

www.evrogen.com

Encyclo PCR kit

Cat#PK001

User Manual

**This product is intended
for research use only.**

TABLE OF CONTENTS

I. Kit components and storage conditions	1
II. Product description	
III. Guidelines for PCR amplification	2
A. General Considerations	
B. PCR protocol	3
C. Notes about Reaction Components	6
D. Cycling conditions	7
E. Control PCR	8
IV. Troubleshooting Guide	10
V. References	13
VI. Appendix	13
A. Recommendations for Electrophoresis	
B. Dealing with contamination	14

I. Kit components and storage conditions

Component	Amount
50X Encyclo polymerase mix	100 μ l
10X Encyclo buffer	600 μ l
50X dNTP mix (10mM each)	120 μ l
Control DNA template	10 μ l
Control PCR primer mix (10 μ M each primer)	10 μ l
Sterile PCR water	1.5 ml

Encyclo PCR kit provides reagents for 100 standard PCR reactions (50 μ l each). The kit includes 1.5 ml of PCR-grade H₂O, which is enough for approximately 40 standard PCRs. We recommend to use Millipore-filtered H₂O for the rest of reactions. Do not use autoclaved H₂O for PCR.

Shipping/Storage

Encyclo Polymerase mix is shipped on dry ice or at -20°C. All other components of Encyclo PCR kit can be shipped at ambient temperature. Once arrived, the kit must be kept at -20°C.

II. Product description

Encyclo PCR kit is intended for most PCR and primer extension applications. It is especially recommended for cDNA amplification due to optimal combination of high fidelity and processivity provided by Encyclo polymerase mix.

Evrogen Encyclo polymerase mix produces high yields of PCR products from a wide variety of templates and is suitable for difficult templates, long PCR (up to 15 kb), and cloning.

Encyclo polymerase mix features

1. High processive 5'>3' DNA polymerase activity
2. Proofreading 3'>5' exonuclease activity
3. Automatic hot start
4. TA-cloning compatibility

2

Encyclo buffer has been developed to provide successful amplification of long DNA templates and is necessary for optimal performance of the Encyclo polymerase mix. The kit also includes a mix of high-purity deoxyribonucleotides, sterile PCR water, control DNA template and primer mix for positive control PCR.

Product Use Limitations

Encyclo PCR kit is intended for research purposes only.

III. Guidelines for PCR amplification

A. General Considerations

1. Avoid cross-contamination

Minute amounts of contaminating DNA can lead to nonspecific amplification even in the absence of an added DNA template.

- We recommend setting up PCRs in a dedicated lab area separately from that used for DNA preparation or analysis of PCR products.
- Use PCR pipette tips containing hydrophobic filters to minimize cross-contamination.
- It is strongly recommended to include a negative control (in which sterile water is used instead of DNA template) in every experiment.

2. Include positive control

Always perform a positive control to ensure that each component is functional. See section III.E. "Control PCR" for details.

3. Use PCR master mix

Use of a PCR master mix reduces tube-to-tube variations in multiple PCR. The master mix typically contains all components needed for PCR except for those varying from one reaction to another. For example, if multiple templates are being tested with the same primers, include the primers in the master mix. If one template is being tested with multiple primer sets, include the template in the master mix.

Prepare a volume of master mix 10% greater than that required for the total number of PCR assays including positive and negative controls.

The master mix should be thoroughly mixed before use.

4. Use careful pipetting technique

When small volumes of reagents are used in PCR experiments, careful pipetting technique is crucial to avoid tube-to-tube variations. Always be sure that no extra solution is on the outside of a pipette tip before transfer. When adding solution to a tube, immerse the tip into the reaction mixture, deliver the solution, and rinse the pipette tip by pipetting up and down several times.

5. Do not use manual hot start

Encyclo polymerase mix provides automatic hot start. Manual hot start is not required.

B. PCR protocol

1. Prepare a PCR master mix by combining the following reagents in the order shown in Table 1.

2. Mix by vortexing (without bubbling) and spin the tube briefly in a microcentrifuge.

3. Immediately before thermal cycling, aliquot the PCR master mix into an appropriate number of sterile 0.2-ml or 0.5-ml PCR tubes.

Note: Thin-wall PCR tubes are recommended. These PCR tubes are optimized to ensure more efficient heat transfer and to maximize thermal-cycling performance.

4. If required, add missing components, i.e. components that vary from one reaction to the other.

5. If your thermal cycler is not equipped with a heated cover, overlay each reaction with a drop of molecular biology grade mineral oil.

6. Perform PCR using the optimized cycling conditions as described in the section III.D.

7. If required, analyze the PCR amplification products using electrophoresis on a 1.0-4.0% (w/v) agarose gel with etidium bromide (EtBr) staining. Recommendations related to agarose gel electrophoresis are available in the Appendix A.

PCR products can be stored at -20°C.

Table 1. Setting up PCR master mix

Component/ reaction volume *	25 μ l	50 μ l	Final concentration
Sterile water	add to 25 μ l	add to 50 μ l	-
10X Encyclo buffer	2.5 μ l	5 μ l	1X
50X dNTP mix	0.5 μ l	1 μ l	1X (0.2 mM each)
Upstream Primer**	variable	variable	0.2 - 0.5 μ M
Downstream Primer**	variable	variable	0.2 - 0.5 μ M
DNA template**	variable	variable	1pg - 200ng/50 μ l
50X Encyclo polymerase mix	0.5 μ l	1 μ l	1X
Total volume	25 μ l	50 μ l	-

*The recipe is for one reaction and must be adjusted for multiple samples. See section III.C "Notes about Reaction Components" for more details on PCR components.

**These components should be added into a PCR master mix (when same components are used for all PCRs) or into PCR tubes after PCR master mix aliquoting (when different components are used in different PCRs).

C. Notes about Reaction Components

1. Enzyme, Buffer, Mg²⁺ concentration, dNTP concentration

The recommended amount of Encyclo polymerase mix allows successful PCR of DNA templates up to 15 kb.

Encyclo PCR buffer provided is essential for optimal yield and specificity of PCR. Suboptimal results will be achieved using other buffers.

The provided 10X Encyclo buffer contains the magnesium ion concentration optimal for the Encyclo polymerase mix. Adjusting the magnesium concentration is not recommended.

High quality dNTPs provided should be used for optimal performance with Encyclo polymerase mix. Optimal dNTP concentration is 200 μ M of each dNTP. Adjusting the dNTP concentration is not recommended for templates up to 10 kb. dUTP and other dUTP-derivatives or analogues were not tested.

2. Templates

Template quality is not crucial for many conventional applications, so that PCR may be performed on DNA or cDNA prepared by any common method as well as on cell lysates or bacterial colonies. However, template quality is strictly important for amplification of long templates (e.g. templates longer than 3 kb) or when highest possible sensitivity of PCR is needed. For example such PCR applications as RACE and Genome Walking require high quality templates.

Please note that a number of compounds can inhibit PCR amplification including ionic detergents, some gel loading dyes, ethanol, phenol and hemin.

When purifying templates from agarose gels, minimize exposure to UV irradiation to prevent formation of pyrimidine dimers.

The amount of DNA template required on PCR start varies depending on the source, quality and length of DNA being amplified. In many applications the optimal amount of a low complexity template (cloned DNA fragments, lambda DNA, etc) ranges between 1 pg -10 ng per 50 µl reaction; 20 - 50 ng per 50 µl reaction for cDNA; and 50 - 200 ng per 50 µl reaction for high complexity genomes (e.g. human genomic DNA).

Excessive amounts of template DNA can inhibit PCR.

3. Primers

Primer concentrations between 0.2 and 0.5 µM are recommended (generally 100-250 ng for typical 20- to 30-mer oligonucleotide primers in a 50-µl reaction volume). Primers designed to have similar melting temperatures are recommended. Primers with melting temperatures less than 50°C are not recommended for use with Encyclo PCR kit.

The annealing temperature of primers 20 nt or more in length with a 45-60% GC content is generally between 60° and 72°C promoting their specificity and discouraging secondary structure formation.

Primer sequences should be analyzed for potential duplex and hairpin formation as well as false priming sites in order to obtain the highest yield of specific PCR products.

Avoid complementarity of two or three bases at the 3' ends of primer pairs to reduce primer-dimer formation. Avoid runs of 3 or more Gs or Cs at the 3' end. Avoid complementary sequences within a primer sequence and between the primer pair.

4. PCR additives

Encyclo polymerase mix tolerates DMSO concentrations (up to 6%) needed to open up complex secondary structures within DNA templates. We recommend using DMSO for difficult templates in concentrations of 2-6%.

Note: In high DMSO concentrations the annealing temperature must be lowered, because DMSO decreases the melting point of the primers. It has been reported that 10% DMSO decreases the melting temperature by 5.5-6.0°C.

Other additives which help DNA denaturation (formamide, glycerol, betaine and combinations of these) have not been tested with Encyclo polymerase mix yet.

D. Cycling conditions

Use Table 2 to determine PCR cycling parameters.

Optimal cycling conditions, such as incubation times, temperatures, and the number of cycles may vary and must be individually determined. Optimization of PCR parameters allows achieving highest product yield and specificity.

Table 2. PCR cycling parameters

Cycle step	Number of cycles	Temperature	Duration
Initial denaturation	1	92-95°C	1 min - 3 min;
Denaturation	10-35	92-95°C	5 sec - 1 min
Annealing		T _m	5 sec - 1 min
Extension		72°C	1 minute/1 - 1.5 kb
Final extension (optional)	1	T _m 72°C	5 sec - 1 min 2-10 min

1. Denaturation

Denaturation time and temperature depend at least in part on the ramp rate and temperature control mode of the thermal cycler. After an initial denaturation for up to 3 min at 92 - 95°C, keep the denaturation as short as possible (for example 20 sec or less at 95°-94°C). This is particularly important for long PCR.

Initial denaturation for 3 min is recommended for complex genomic DNA, while shorter time (up to 2 min) should be used with simpler templates.

2. Primer annealing

Optimal primer annealing temperature depends on the primer structure. Typically annealing temperatures range between 55° and 72°C.

Simplified formula for estimating annealing temperature (T_m) is
 $T_m = 2^{\circ}\text{C} \times (\text{A}+\text{T}) + 4^{\circ}\text{C} \times (\text{G}+\text{C})$.

Optimal annealing temperatures may be above or below the estimated T_m (for up to 5°C). In many cases, use of an annealing temperature which is 5°C above the calculated T_m , i.e. $T_m + 5^{\circ}\text{C}$, can sharply increase PCR specificity.

To achieve maximal reaction specificity, use primers designed to have a high annealing temperature (preferably 65°- 68°C).

Whenever possible, design primer pairs with similar T_m values. When two primers have different T_m , use the lowest one for PCR cycling.

3. Extension

Extension should be performed at 72°C for the most PCR applications. A constant extension time can be used (one minute per 1.3 - 1.5 kb of expected extension product).

To enhance TA cloning and achieve complete DNA extension, it may be helpful to include an additional incubation step of 2-10 min at 72°C at the end of cycling.

4. Number of PCR cycles

We recommend using the marginally possible number of PCR cycles since overcycling may yield a nonspecific PCR product. If necessary, undercycling can be easily rectified by placing the reaction tube back into the thermal cycler for a few more cycles (see Troubleshooting Guide).

8

A number of PCR cycles required to produce a certain amount of PCR product (e.g. 5-10 ng/ μ l) strongly depends on the initial number of target DNA molecules used for PCR amplification.

This dependence may be formulated as follows:

$N=2^{(40-n)}$ where "N" means a number of DNA molecules at the start of amplification and "n"- a number of PCR cycles required to amplify the product to yield the concentration of 5-10 ng/ μ l. For example, for a 1 kb long DNA molecule (weight is about 10^{-18} g) the following rules are correct (when optimal PCR conditions are used):

Template amount at PCR start (50 μ l reaction)	Number of PCR cycles to amplify 5-10 ng/ μ l of DNA
1 molecule	40 cycles
1000 molecules	30 cycles
10^6 molecules (1 pg)	20 cycles
10^9 molecules (1 ng)	10 cycles

Please keep in mind that a PCR product visible on agarose/EtBr gel only after 40 or more PCR cycles is amplified from a single molecule and could result from a casual contamination.

E. Control PCR

1. Assemble the reaction using the Control Template and Control Primers Mix in a sterile PCR tube:

40 μ l	Sterile water
5 μ l	10X Encyclo Buffer
1 μ l	50X dNTP mix
2 μ l	Control Primer mix
1 μ l	Control DNA template
1 μ l	50X Encyclo polymerase mix
50 μl	Total volume

2. Mix gently and spin the tube briefly in a microcentrifuge.
3. If the temperature cycler is not equipped with a heated cover, overlay each reaction with two drops of mineral oil.
4. Commence thermal cycling using the following parameters*:
 - a) Initially denature the template at 95°C for 2 minutes;
 - b) Perform 18 cycles:

Denaturation	95°C, 20 sec
Annealing	60°C, 20 sec
Elongation	72°C, 2 min
 - c) Perform a final extension at 72°C for 2 minutes.

*PCR cycling parameters have been optimized for MJ Research PTC-200 DNA Thermal Cycler. Optimal parameters may vary with different thermal cyclers, polymerase lots, and templates.

5. Analyze the PCR amplification products by electrophoresis on a 1.0-4.0% (w/v) agarose/EtBr gel. Amplification of the control template generates a 1600 bp product (Fig. 1).

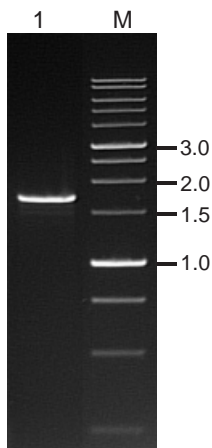


Figure 1. Successful result of a control PCR.

Control PCR was performed as described in the section III.E. PCR products (lane 1) were visualized by electrophoresis on 1.5% agarose/EtBr gel alongside of 1 kb DNA size markers (lane M; 50 ng per lane; Sibenzyme).

IV. Troubleshooting Guide

The following general guidelines apply to most PCR reactions. However, no attempt has been made to address troubleshooting for all of the many applications for which the Encyclo PCR kit can be used.

Problem	Putative causes	Suggestions
A. Low yield or no product observed	PCR component missing or degraded	Use a checklist when assembling reactions. Do not use buffers optimized for another polymerase. Always perform a positive control to ensure that each component is functional. If the positive control does not work, repeat the positive control only. If the positive control does not work again, try optimizing PCR parameters for your particular thermal cycler. If the positive control still does not work, contact Evrogen technical support: customer-support@evrogen.com
	Not enough PCR cycles	Increase the number of PCR cycles (3-5 additional cycles at a time).
	Annealing temperature too high	Decrease the annealing temperature in increments of 2-4°C.
	Denaturation temperature too high	Optimize denaturation temperature by decreasing or increasing it in 1°C increments.
	Extension time too short	Increase the extension time in 1-min increments.
	Suboptimal primer design	Redesign your primer(s) after confirming the accuracy of the sequence information. If the original primer(s) was less than 22 nt long try using a longer primer(s).
	Too high or too low template concentration	Repeat PCR varying the concentration of DNA template.
	Template DNA may be damaged	Check template integrity by agarose/EtBr gel electrophoresis. If necessary, repurify your template using methods that minimize DNA nicking.

Template DNA may comprise components inhibiting PCR	Repurify your template.
Template DNA may be difficult to PCR	Try to use DMSO additive in the concentration of 2-6%.
Too little enzyme	In rare cases, the PCR yield can be improved by increasing the concentration of the enzyme mix. However, increasing the concentration >2X is likely to lead to higher background levels
Mg ²⁺ concentration is too low	Encyclo polymerase has a broader Mg ²⁺ optimum than the native Taq DNA polymerase and can be used over a wider range of Mg ²⁺ without loss of efficiency. Therefore, as long as you use the buffer included in the kit and a final concentration of 0.2 mM of each dNTP, it is unlikely a lack of product is due to problems with the Mg ²⁺ concentration. However, if the concentration of EDTA in the cDNA sample is more than 5 mM, this can reduce the effective concentration of Mg ²⁺ to below a minimum level.

B. Multiple PCR products or smear observed

Too many cycles	Reducing the cycle number may eliminate nonspecific bands and smear.
Annealing temperature too low	Increase the annealing temperature in increments of 2-3°C.
Denaturation temperature too low	Increase the denaturation temperature in increments of 1°C.
Extension time too long	Decrease the extension time in 1-min increments.
Suboptimal primer	Redesign your primer(s) after design confirming the accuracy of the sequence information. If the original primer(s) was less than 22 nt long, try using a longer primer. If the original primer(s) had a GC content of less than 45%, try to design a primer with a GC content of 45-60%.

Contamination	Contamination most often results in extra bands or smearing. It is important to include a negative control (i.e., a control using sterile water instead of the DNA template) in every PCR experiment to determine if the PCR reagents, pipettes or PCR reaction tubes are contaminated with previously amplified targets (see Appendix B for Dealing with contamination). Also, when performing PCR directly on phage plaques or bacterial colonies, failure to isolate single plaques or colonies will also produce multiple bands.
Too much template	Try a lower concentration of DNA template in the PCR reaction.
Poor template	Check template integrity by agarose/EtBr gel electrophoresis. If necessary, re-purify your template.
Too much enzyme	If smearing is observed, first try optimizing the cycle parameters as described above, then try reducing the enzyme concentration to 0.5X Encyclo polymerase mix.
Touchdown PCR is required	"Touchdown" PCR significantly improves the specificity of many PCR reactions in various applications (Don et al., 1991; Roux, 1995). Touchdown PCR involves using an annealing/extension temperature that is several degrees higher than the T_m of the primers during the initial PCR cycles. The annealing/extension temperature is then reduced to the primer T_m for the remaining PCR cycles. The change can be performed either in a single step or in increments over several cycles.
Step-out and/or nested PCR is required	Perform an additional PCR using nested or step-out primers. See detailed description of Step-out PCR in Matz et al., 1999.

V. References

1. Chester N., Marshak D.R. (1993) Dimethyl sulfoxide-mediated primer T_m reduction: a method for analyzing the role of renaturation temperature in the polymerase chain reaction. *Anal. Biochem.* 209(2): 284-290.
2. Don R. H., Cox P. T., Wainwright B. J., Baker K. & Mattick J. S. (1991) 'Touchdown' PCR to circumvent spurious priming during gene amplification. *Nucleic Acids Res.* 19: 4008.
3. Matz M., Shagin D., Bogdanova E., Britanova O., Lukyanov S., Diatchenko L., Chenchik A. (1999) Amplification of cDNA ends based on template-switching effect and step-out PCR. *Nucleic Acids Res.* 27(6): 1558-1560.
4. Roux K. H. (1995) Optimization and troubleshooting in PCR. *PCR Methods Appl.* 4: 5185-5194.

VI. Appendix

Appendix A. Recommendations for Electrophoresis

Transfer a 2-5- μ l sample of your PCR reaction to a fresh tube and add 1 μ l of 5X loading buffer. The remaining reaction mixture can be subjected to further cycling if you do not see a product.

Analyze your sample(s), along with suitable DNA size markers, by electrophoresis on a suitable agarose gel containing 0.1 μ g/ml EtBr. The appropriate percentage of agarose and the choice of DNA size markers depend on the expected size range of a PCR product. You may wish to refer to the following general guidelines before assembling your gel.

Expected insert size range	Recommended % agarose
0.3 - 1.5 kb	1.5
0.5 - 10 kb	1.2
> 5 kb	0.8

Appendix B. Dealing with contamination

If possible, set up the PCR reaction and perform the post-PCR analysis in separate laboratory areas with separate sets of pipettors.

It is advisable to use one of the commercially available aerosol-free pipette tips.

Laboratory benches and pipettor shafts can be decontaminated by depurination. Wipe surfaces with 1N HCl followed by 1N NaOH. Then neutralize with a neutral buffer (e.g., Tris-HCl or PBS) and rinse with ddH₂O.

Endnotes

PCR is the subject of patents issued in certain countries. The purchase of this product does not include a license to perform PCR. However, many researchers may not be required to obtain a license. Other investigators may already have a license to perform PCR through use of a thermal cycler with the appropriate label license.

Material safety data sheet information

EVROGEN JSC (Moscow, Russia) hereby confirms that to the best of our knowledge this product does not require a Material Safety Data Sheet. However, all of the properties of this product (and, if applicable, each of its components) have not been thoroughly investigated. Therefore, we recommend that you use gloves and eye protection and wear a laboratory coat when working with this product.

